



Blue Sky Communities
5300 West Cypress Street
Suite 200
Tampa, Florida 33607

August 9, 2022

Mr. Tim Kennedy
Assistant Director of Multifamily Programs
Florida Housing Finance Corporation
227 N. Bronough Street, Suite 5000
Tallahassee, FL 32301

Re: Alto Tower, 2021-294CSN Request to change
(1) Applicant Member Structure
(2) Co-Developer Entity Name
(3) Development Type

Dear Tim:

On March 10, 2021, Blue CASL Dade, LLC ("Applicant"), submitted an application in response to RFA 2021-103 for Housing Credit and SAIL Financing for Homeless Housing Developments Located in Medium and Large Counties (the "RFA") and was assigned Application No. 2021-294CSN (the "Application"). Furthermore, the Applicant applied for CHIRP funding on July 5, 2022, and is currently in credit underwriting with Seltzer Management Group with the final report expected to be approved at the October 28, 2022, FHFC Board meeting.

The Applicant entity is a limited liability company comprised of: (i) Blue Dade M, LLC, as manager and non-investor member; (ii) CASL Dade, LLC, as manager and non-investor member Non-Profit; and (iii) Blue Sky Communities LLC, as initial investor member.

Section 4 A.3.c. (3) of the RFA provides as follows:

The Applicant entity shall be the recipient of the Housing Credits, and the borrowing entity for the SAIL loans(s) and cannot be changed in any way (materially or non-materially) until after the closing of the loan(s). . . . Changes to the Applicant entity (material or non-material) prior to the loan closing or without Board approval after loan closing may result in disqualification from receiving funding and may be deemed a material misrepresentation.

The Applicant requests a hardship waiver of the provisions of the RFA to add principals of the Manager/Member entity for Blue Dade M, LLC. Weedon Enterprises, LLC will be added to keep the structure consistent with Blue Sky Communities, LLC and all of Blue Sky's other Manager/Member entities. Weedon was intentionally omitted from the applicant entity when our application was submitted to FHFC due to pending changes to the LLC entity.

This waiver request does not violate the intent of the RFA and will not adversely impact Florida Housing or any other applicant. Accordingly, the Applicant requests Florida Housing approve a waiver of the provisions of the RFA to allow the change in structure of the Applicant entity prior to loan closing. Organizational charts for the current and proposed entities are attached hereto.

Secondly, we request to change the name of the Co-Developer entity from Blue Sky Developer, LLC to Blue AT Developer, LLC. This change is for a specific single purpose entity for this development only, all principals are the same.

Thirdly, we request to change the Development Type from High-Rise 7 to Mid-Rise 6. As a direct result of rising construction costs, the Architect redesigned the unit mix and was able to reduce the building by one story. All features and amenities as originally committed will be provided. This change does not affect any scoring or leveraging item in the Homeless RFA and we meet the TDC calculations for Mid-Rise.

These requests were previously submitted to staff on April 29, 2022. Staff requested to re-submit for board approval along with our final credit underwriting report. Please contact Angela Hatcher at ahatcher@blueskycommunities.com or 727-269-3853 if you have any questions.

Sincerely,

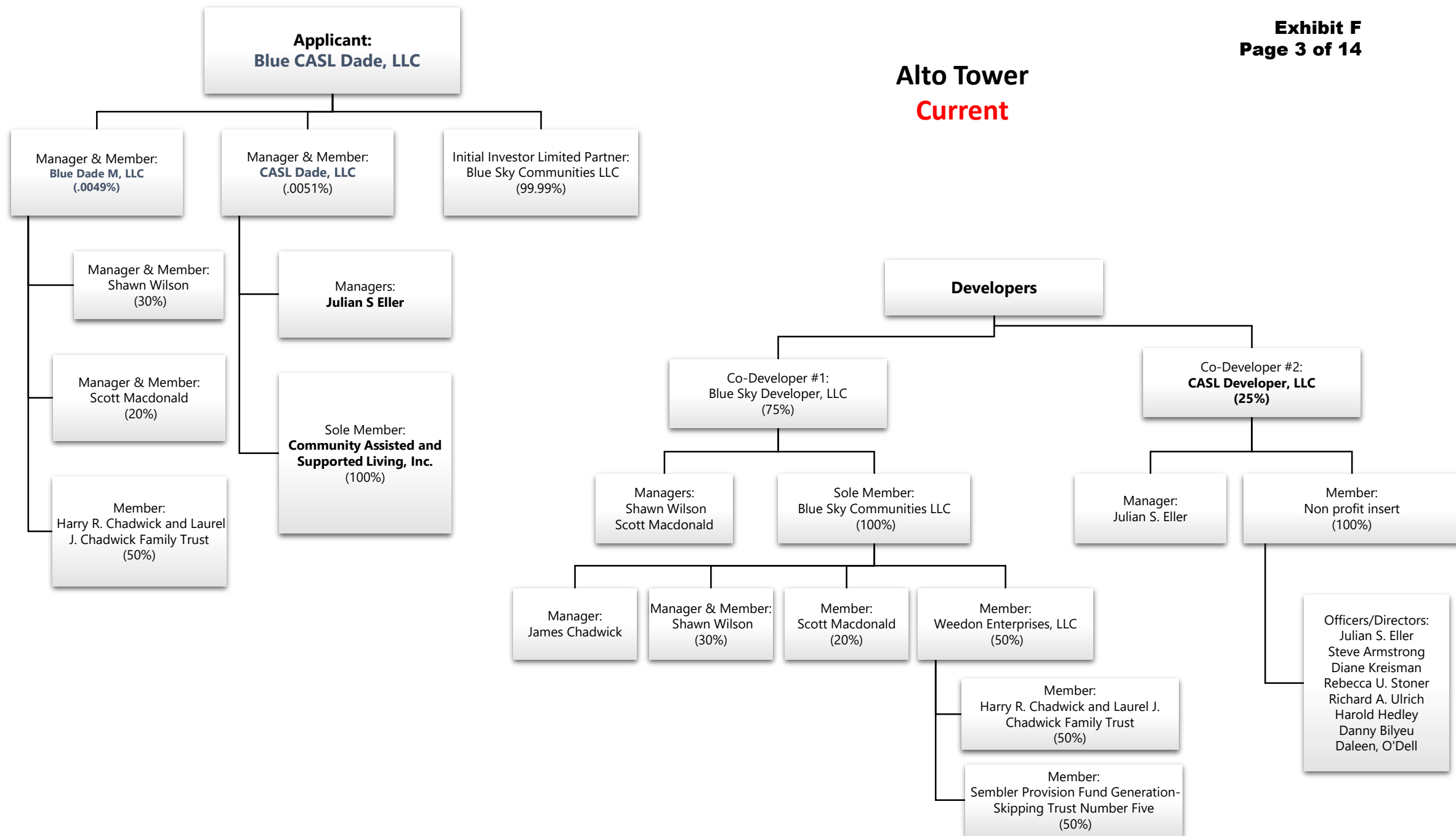
BLUE CASL DADE, LLC

By: Blue DADE M, LLC, its manager

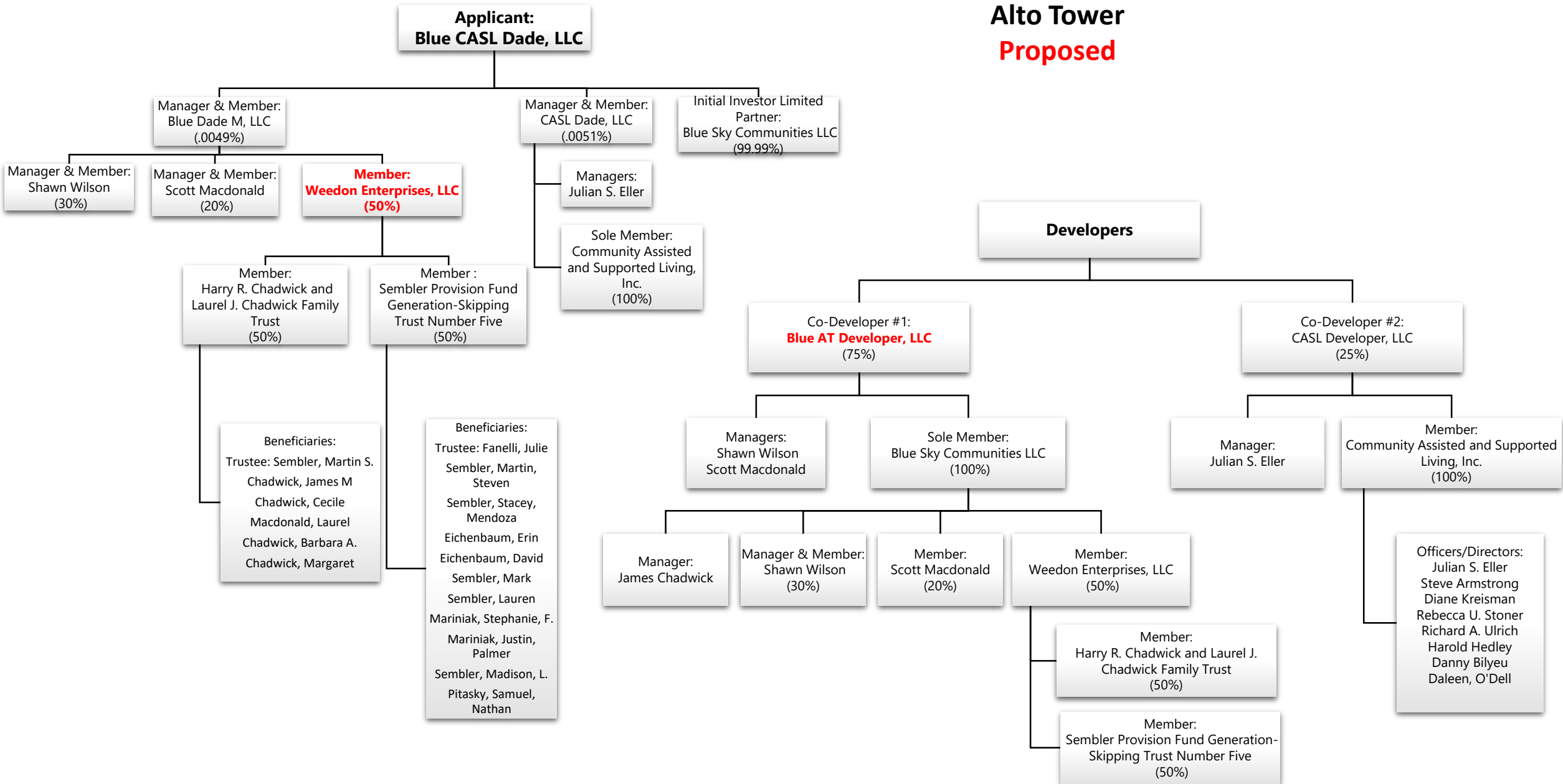
By: 

Shawn Wilson, Manager

Alto Tower
Current



Alto Tower
Proposed



Principal Disclosures for the Applicant

APPROVED for HOUSING CREDITS
FHFC Advance Review
Received 2.17.21; Approved 2.22.21

Select the organizational structure for the Applicant entity:

The Applicant is a: Limited Liability Company

Provide the name of the Applicant Limited Liability Company:

Blue CASL Dade, LLC

First Principal Disclosure Level:

[Click here for Assistance with Completing the Entries for the First Level Principal Disclosure for the Applicant](#)

First Level Entity #	Select Type of Principal of Applicant	Enter Name of First Level Principal	Select organizational structure of First Level Principal identified
1.	Manager	Blue Dade M, LLC	Limited Liability Company
2.	Manager	CASL Dade, LLC	Limited Liability Company
3.	Non-Investor Member	Blue Dade M, LLC	Limited Liability Company
4.	Non-Investor Member	CASL Dade, LLC	Limited Liability Company
5.	Investor Member	Blue Sky Communities LLC	Limited Liability Company

Second Principal Disclosure Level:

Blue CASL Dade, LLC

[Click here for Assistance with Completing the Entries for the Second Level Principal Disclosure for the Applicant](#)

Select the corresponding First Level Principal Entity # from above for which the Second Level Principal is being identified

Select the type of Principal being associated with the corresponding First Level Principal Entity

Select organizational structure of Second Level Principal identified

Second Level Entity #	Select type of Principal	Enter Name of Second Level Principal	Select organizational structure of Second Level Principal identified
<u>1. (Blue Dade M, LLC)</u>	1.A. <u>Manager</u>	<u>Wilson, Shawn</u>	<u>Natural Person</u>
<u>1. (Blue Dade M, LLC)</u>	1.B. <u>Member</u>	<u>Wilson, Shawn</u>	<u>Natural Person</u>
<u>1. (Blue Dade M, LLC)</u>	1.C. <u>Manager</u>	<u>Macdonald, Scott</u>	<u>Natural Person</u>
<u>1. (Blue Dade M, LLC)</u>	1.D. <u>Member</u>	<u>Macdonald, Scott</u>	<u>Natural Person</u>
<u>1. (Blue Dade M, LLC)</u>	1.E. <u>Member</u>	<u>Harry R. Chadwick and Laurel J. Chadwick Family Trust</u>	<u>Trust</u>
<u>2. (CASL Dade, LLC)</u>	2.A. <u>Manager</u>	<u>Eller, Julian S.</u>	<u>Natural Person</u>
<u>2. (CASL Dade, LLC)</u>	2.B. <u>Member</u>	<u>Community Assisted and Supported Living, Inc.</u>	<u>Non-Profit Corporation</u>
<u>3. (Blue Dade M, LLC)</u>	3.A. <u>Manager</u>	<u>Wilson, Shawn</u>	<u>Natural Person</u>
<u>3. (Blue Dade M, LLC)</u>	3.B. <u>Member</u>	<u>Wilson, Shawn</u>	<u>Natural Person</u>
<u>3. (Blue Dade M, LLC)</u>	3.C. <u>Manager</u>	<u>Macdonald, Scott</u>	<u>Natural Person</u>
<u>3. (Blue Dade M, LLC)</u>	3.D. <u>Member</u>	<u>Macdonald, Scott</u>	<u>Natural Person</u>
<u>3. (Blue Dade M, LLC)</u>	3.E. <u>Member</u>	<u>Harry R. Chadwick and Laurel J. Chadwick Family Trust</u>	<u>Trust</u>
<u>4. (CASL Dade, LLC)</u>	4.A. <u>Manager</u>	<u>Eller, Julian S.</u>	<u>Natural Person</u>
<u>4. (CASL Dade, LLC)</u>	4.B. <u>Member</u>	<u>Community Assisted and Supported Living, Inc.</u>	<u>Non-Profit Corporation</u>

Third Principal Disclosure Level:

Blue CASL Dade, LLC

[Click here for Assistance with Completing the Entries for the Third Level Principal Disclosure for the Applicant](#)

Select the corresponding Second Level Principal Entity # from above for which the Third Level Principal is being identified

Select the type of Principal being associated with the corresponding Second Level Principal Entity

The organizational structure of Third Level Principal identified Must be either a Natural Person or a Trust

Third Level Entity #	Select type of Principal	Enter Name of Third Level Principal who must be either a Natural Person or a Trust	The organizational structure of Third Level Principal identified
<u>1.E. (Harry R. Chadwick and Laurel J. Cf</u>	1.E.(1) <u>Trustee</u>	<u>Sembler, Martin S.</u>	<u>Natural Person</u>
<u>1.E. (Harry R. Chadwick and Laurel J. Cf</u>	1.E.(2) <u>Beneficiary</u>	<u>Chadwick, James M.</u>	<u>Natural Person</u>
<u>1.E. (Harry R. Chadwick and Laurel J. Cf</u>	1.E.(3) <u>Beneficiary</u>	<u>Chadwick, Cecile</u>	<u>Natural Person</u>
<u>1.E. (Harry R. Chadwick and Laurel J. Cf</u>	1.E.(4) <u>Beneficiary</u>	<u>Macdonald, Laurel</u>	<u>Natural Person</u>
<u>1.E. (Harry R. Chadwick and Laurel J. Cf</u>	1.E.(5) <u>Beneficiary</u>	<u>Chadwick, Barbara A.</u>	<u>Natural Person</u>
<u>1.E. (Harry R. Chadwick and Laurel J. Cf</u>	1.E.(6) <u>Beneficiary</u>	<u>Chadwick, Margaret</u>	<u>Natural Person</u>
<u>2.B. (Community Assisted and Support</u>	2.B.(1) <u>Executive Director</u>	<u>Eller, Julian S.</u>	<u>Natural Person</u>
<u>2.B. (Community Assisted and Support</u>	2.B.(2) <u>Officer/Director</u>	<u>Armstrong, Steve</u>	<u>Natural Person</u>
<u>2.B. (Community Assisted and Support</u>	2.B.(3) <u>Officer/Director</u>	<u>Kreisman, Diane</u>	<u>Natural Person</u>
<u>2.B. (Community Assisted and Support</u>	2.B.(4) <u>Officer/Director</u>	<u>Stoner, Rebecca U.</u>	<u>Natural Person</u>
<u>2.B. (Community Assisted and Support</u>	2.B.(5) <u>Officer/Director</u>	<u>Ulrich, Richard A.</u>	<u>Natural Person</u>

Principal Disclosures for the Applicant

APPROVED for HOUSING CREDITS
FHFC Advance Review
Received 2.17.21; Approved 2.22.21

2.B. (Community Assisted and Support	2.B.(6)	Officer/Director	Hedley, Harold	Natural Person
2.B. (Community Assisted and Support	2.B.(7)	Officer/Director	Bilyeu, Danny	Natural Person
2.B. (Community Assisted and Support	2.B.(8)	Officer/Director	O'Dell, Daleen	Natural Person
3.E. (Harry R. Chadwick and Laurel J. Cl	3.E.(1)	Trustee	Sembler, Martin S.	Natural Person
3.E. (Harry R. Chadwick and Laurel J. Cl	3.E.(2)	Beneficiary	Chadwick, James M.	Natural Person
3.E. (Harry R. Chadwick and Laurel J. Cl	3.E.(3)	Beneficiary	Chadwick, Cecile	Natural Person
3.E. (Harry R. Chadwick and Laurel J. Cl	3.E.(4)	Beneficiary	Macdonald, Laurel	Natural Person
3.E. (Harry R. Chadwick and Laurel J. Cl	3.E.(5)	Beneficiary	Chadwick, Barbara A.	Natural Person
3.E. (Harry R. Chadwick and Laurel J. Cl	3.E.(6)	Beneficiary	Chadwick, Margaret	Natural Person
4.B. (Community Assisted and Support	4.B.(1)	Executive Director	Eller, Julian S.	Natural Person
4.B. (Community Assisted and Support	4.B.(2)	Officer/Director	Armstrong, Steve	Natural Person
4.B. (Community Assisted and Support	4.B.(3)	Officer/Director	Kreisman, Diane	Natural Person
4.B. (Community Assisted and Support	4.B.(4)	Officer/Director	Stoner, Rebecca U.	Natural Person
4.B. (Community Assisted and Support	4.B.(5)	Officer/Director	Ulrich, Richard A.	Natural Person
4.B. (Community Assisted and Support	4.B.(6)	Officer/Director	Hedley, Harold	Natural Person
4.B. (Community Assisted and Support	4.B.(7)	Officer/Director	Bilyeu, Danny	Natural Person
4.B. (Community Assisted and Support	4.B.(8)	Officer/Director	O'Dell, Daleen	Natural Person

Principal Disclosures for the two Developers

APPROVED for HOUSING CREDITS
FHFC Advance Review
Received 2.17.21; Approved 2.22.21

How many Developers are part of this Application structure? (Please complete the Principal Disclosures for each of the two Co-Developers below.)

2

Select the organizational structure for the first Co-Developer entity:

The first Co-Developer is a: Limited Liability Company

Provide the name of the Developer Limited Liability Company:

Blue Sky Developer, LLC

First Principal Disclosure Level:

Blue Sky Developer, LLC

[Click here for Assistance with Completing the Entries for the First Level Principal Disclosure for a Developer](#)

<u>First Level Entity #</u>	<u>Select Type of Principal of Developer</u>	<u>Enter Name of First Level Principal</u>	<u>Select organizational structure of First Level Principal identified</u>
1.	<u>Manager</u>	<u>Wilson, Shawn</u>	<u>Natural Person</u>
2.	<u>Manager</u>	<u>Macdonald, Scott</u>	<u>Natural Person</u>
3.	<u>Sole Member</u>	<u>Blue Sky Communities LLC</u>	<u>Limited Liability Company</u>

Second Principal Disclosure Level:

Blue Sky Developer, LLC

[Click here for Assistance with Completing the Entries for the Second Level Principal Disclosure for a Developer](#)

Select the corresponding First Level Principal Entity # from above for which the Second Level Principal is being identified

<u>Second Level Entity #</u>	<u>Select the type of Principal being associated with the corresponding First Level Principal Entity</u>	<u>Enter Name of Second Level Principal</u>	<u>Select organizational structure of Second Level Principal identified</u>
<u>3. (Blue Sky Communities LLC)</u>	<u>3.A. Manager</u>	<u>Wilson, Shawn</u>	<u>Natural Person</u>
<u>3. (Blue Sky Communities LLC)</u>	<u>3.B. Member</u>	<u>Wilson, Shawn</u>	<u>Natural Person</u>
<u>3. (Blue Sky Communities LLC)</u>	<u>3.C. Manager</u>	<u>Chadwick, James M.</u>	<u>Natural Person</u>
<u>3. (Blue Sky Communities LLC)</u>	<u>3.D. Member</u>	<u>Macdonald, Scott</u>	<u>Natural Person</u>
<u>3. (Blue Sky Communities LLC)</u>	<u>3.E. Member</u>	<u>Weedon Enterprises, LLC</u>	<u>Limited Liability Company</u>

Principal Disclosures for the two Developers

APPROVED for HOUSING CREDITS
FHFC Advance Review
Received 2.17.21; Approved 2.22.21

Select the organizational structure for the second Co-Developer entity:

The second Co-Developer is a: Limited Liability Company

Provide the name of the Developer Limited Liability Company:

CASL Developer, LLC

First Principal Disclosure Level:

CASL Developer, LLC

[Click here for Assistance with Completing the Entries for the First Level Principal Disclosure for a Developer](#)

<u>First Level Entity #</u>	<u>Select Type of Principal of Developer</u>	<u>Enter Name of First Level Principal</u>	<u>Select organizational structure of First Level Principal identified</u>
1.	<u>Manager</u>	<u>Eller, Julian S.</u>	<u>Natural Person</u>
2.	<u>Sole Member</u>	<u>Community Assisted and Supported Living, Inc.</u>	<u>Non-Profit Corporation</u>

Second Principal Disclosure Level:

CASL Developer, LLC

[Click here for Assistance with Completing the Entries for the Second Level Principal Disclosure for a Developer](#)

<u>Select the corresponding First Level Principal Entity # from above for which the Second Level Principal is being</u>	<u>Second Level Entity #</u>	<u>Select the type of Principal being associated with the corresponding First Level Principal Entity</u>	<u>Enter Name of Second Level Principal</u>	<u>Select organizational structure of Second Level Principal identified</u>
<u>2. (Community Assisted and Suppo</u>	2.A.	<u>Executive Director</u>	<u>Eller, Julian S.</u>	<u>Natural Person</u>
<u>2. (Community Assisted and Suppo</u>	2.B.	<u>Officer/Director</u>	<u>Armstrong, Steve</u>	<u>Natural Person</u>
<u>2. (Community Assisted and Suppo</u>	2.C.	<u>Officer/Director</u>	<u>Kreisman, Diane</u>	<u>Natural Person</u>
<u>2. (Community Assisted and Suppo</u>	2.D.	<u>Officer/Director</u>	<u>Stoner, Rebecca U.</u>	<u>Natural Person</u>
<u>2. (Community Assisted and Suppo</u>	2.E.	<u>Officer/Director</u>	<u>Ulrich, Richard A.</u>	<u>Natural Person</u>
<u>2. (Community Assisted and Suppo</u>	2.F.	<u>Officer/Director</u>	<u>Hedley, Harold</u>	<u>Natural Person</u>
<u>2. (Community Assisted and Suppo</u>	2.G.	<u>Officer/Director</u>	<u>Bilyeu, Danny</u>	<u>Natural Person</u>
<u>2. (Community Assisted and Suppo</u>	2.H.	<u>Officer/Director</u>	<u>O'Dell, Daleen</u>	<u>Natural Person</u>

<Select a #>	<Select an option>	<Select an option>	<Select an option>
<Select a #>	<Select an option>	<Select an option>	<Select an option>
<Select a #>	<Select an option>	<Select an option>	<Select an option>
<Select a #>	<Select an option>	<Select an option>	<Select an option>
<Select a #>	<Select an option>	<Select an option>	<Select an option>
<Select a #>	<Select an option>	<Select an option>	<Select an option>
<Select a #>	<Select an option>	<Select an option>	<Select an option>
<Select a #>	<Select an option>	<Select an option>	<Select an option>
<Select a #>	<Select an option>	<Select an option>	<Select an option>
<Select a #>	<Select an option>	<Select an option>	<Select an option>
<Select a #>	<Select an option>	<Select an option>	<Select an option>
<Select a #>	<Select an option>	<Select an option>	<Select an option>
<Select a #>	<Select an option>	<Select an option>	<Select an option>
<Select a #>	<Select an option>	<Select an option>	<Select an option>
<Select a #>	<Select an option>	<Select an option>	<Select an option>
<Select a #>	<Select an option>	<Select an option>	<Select an option>
<Select a #>	<Select an option>	<Select an option>	<Select an option>
<Select a #>	<Select an option>	<Select an option>	<Select an option>
<Select a #>	<Select an option>	<Select an option>	<Select an option>
<Select a #>	<Select an option>	<Select an option>	<Select an option>
<Select a #>	<Select an option>	<Select an option>	<Select an option>
<Select a #>	<Select an option>	<Select an option>	<Select an option>
<Select a #>	<Select an option>	<Select an option>	<Select an option>
<Select a #>	<Select an option>	<Select an option>	<Select an option>
<Select a #>	<Select an option>	<Select an option>	<Select an option>
<Select a #>	<Select an option>	<Select an option>	<Select an option>
<Select a #>	<Select an option>	<Select an option>	<Select an option>
<Select a #>	<Select an option>	<Select an option>	<Select an option>
<Select a #>	<Select an option>	<Select an option>	<Select an option>

Fourth Principal Disclosure Level:

Blue CASL Dade, LLC

[Click here for Assistance with Completing the Entries for the Fourth Level Principal Disclosure for the Applicant](#)

Select the corresponding Third Level Principal Entity # from above for which the Fourth Level Principal is being identified	Select the type of Principal being associated with the corresponding Third Level Principal Entity	Enter Name of Fourth Level Principal who must be a Natural Person	The organizational structure of Fourth Level Principal identified Must Be a Natural Person	4th Level Principal % Ownership of 3rd Level Principal
1.E.(3) (Harry R. Chadwick and Laurel J. Chadwic	Trustee	Sembler, Martin S.	Natrual Person	100.0000%
1.E.(3) (Harry R. Chadwick and Laurel J. Chadwic	Beneficiary	Chadwick, James M	Natrual Person	0.0000%
1.E.(3) (Harry R. Chadwick and Laurel J. Chadwic	Beneficiary	Chadwick, Cecile	Natrual Person	0.0000%
1.E.(3) (Harry R. Chadwick and Laurel J. Chadwic	Beneficiary	Macdonald, Laurel	Natrual Person	0.0000%
1.E.(3) (Harry R. Chadwick and Laurel J. Chadwic	Beneficiary	Chadwick, Barbara A.	Natrual Person	0.0000%
1.E.(3) (Harry R. Chadwick and Laurel J. Chadwic	Beneficiary	Chadwick, Margaret	Natrual Person	0.0000%
1.E.(4) (Sembler Provision Fund Generation-Skip	Trustee	Fanelli, Julie	Natrual Person	100.0000%
1.E.(4) (Sembler Provision Fund Generation-Skip	Beneficiary	Sembler, Martin, Steven	Natrual Person	0.0000%
1.E.(4) (Sembler Provision Fund Generation-Skip	Beneficiary	Sembler, Stacey, Mendoza	Natrual Person	0.0000%
1.E.(4) (Sembler Provision Fund Generation-Skip	Beneficiary	Eichenbaum, Erin	Natrual Person	0.0000%
1.E.(4) (Sembler Provision Fund Generation-Skip	Beneficiary	Eichenbaum, David	Natrual Person	0.0000%
1.E.(4) (Sembler Provision Fund Generation-Skip	Beneficiary	Sembler, Mark	Natrual Person	0.0000%
1.E.(4) (Sembler Provision Fund Generation-Skip	Beneficiary	Sembler, Lauren	Natrual Person	0.0000%
1.E.(4) (Sembler Provision Fund Generation-Skip	Beneficiary	Mariniak, Stephanie, F.	Natrual Person	0.0000%
1.E.(4) (Sembler Provision Fund Generation-Skip	Beneficiary	Mariniak, Justin, Palmer	Natrual Person	0.0000%
1.E.(4) (Sembler Provision Fund Generation-Skip	Beneficiary	Sembler, Madison, L.	Natrual Person	0.0000%
1.E.(4) (Sembler Provision Fund Generation-Skip	Beneficiary	Pitasky, Samuel, Nathan	Natrual Person	0.0000%
3.E.(3) (Harry R. Chadwick and Laurel J. Chadwic	Trustee	Sembler, Martin S.	Natrual Person	100.0000%
3.E.(3) (Harry R. Chadwick and Laurel J. Chadwic	Beneficiary	Chadwick, James M	Natrual Person	0.0000%
3.E.(3) (Harry R. Chadwick and Laurel J. Chadwic	Beneficiary	Chadwick, Cecile	Natrual Person	0.0000%
3.E.(3) (Harry R. Chadwick and Laurel J. Chadwic	Beneficiary	Macdonald, Laurel	Natrual Person	0.0000%
3.E.(3) (Harry R. Chadwick and Laurel J. Chadwic	Beneficiary	Chadwick, Barbara A.	Natrual Person	0.0000%
3.E.(3) (Harry R. Chadwick and Laurel J. Chadwic	Beneficiary	Chadwick, Margaret	Natrual Person	0.0000%
3.E.(4) (Sembler Provision Fund Generation-Skip	Trustee	Fanelli, Julie	Natrual Person	100.0000%
3.E.(4) (Sembler Provision Fund Generation-Skip	Beneficiary	Sembler, Martin, Steven	Natrual Person	0.0000%
3.E.(4) (Sembler Provision Fund Generation-Skip	Beneficiary	Sembler, Stacey, Mendoza	Natrual Person	0.0000%
3.E.(4) (Sembler Provision Fund Generation-Skip	Beneficiary	Eichenbaum, Erin	Natrual Person	0.0000%
3.E.(4) (Sembler Provision Fund Generation-Skip	Beneficiary	Eichenbaum, David	Natrual Person	0.0000%
3.E.(4) (Sembler Provision Fund Generation-Skip	Beneficiary	Sembler, Mark	Natrual Person	0.0000%
3.E.(4) (Sembler Provision Fund Generation-Skip	Beneficiary	Sembler, Lauren	Natrual Person	0.0000%
3.E.(4) (Sembler Provision Fund Generation-Skip	Beneficiary	Mariniak, Stephanie, F.	Natrual Person	0.0000%

Principal Disclosures for the two Developers

How many Developers are part of this Application structure? (Please complete the Principal Disclosures for each of the two Co-Developers below.)

2

Select the organizational structure for the first Co-Developer entity:

The first Co-Developer is a: Limited Liability Company

Provide the name of the Developer Limited Liability Company:

Blue AT Developer, LLC

First Principal Disclosure Level:

Blue AT Developer, LLC

[Click here for Assistance with Completing the Entries for the First Level Principal Disclosure for a Developer](#)

First Level Entity #	Select Type of Principal of Developer	Enter Name of First Level Principal	Select organizational structure of First Level Principal identified
1.	<u>Manager</u>	<u>Wilson, Shawn</u>	<u>Natural Person</u>
2.	<u>Manager</u>	<u>Macdonald, Scott</u>	<u>Natural Person</u>
3.	<u>Sole Member</u>	<u>Blue Sky Communities LLC</u>	<u>Limited Liability Company</u>
4.	<u><Select an option></u>	<u></u>	<u><Select an option></u>
5.	<u><Select an option></u>	<u></u>	<u><Select an option></u>
6.	<u><Select an option></u>	<u></u>	<u><Select an option></u>
7.	<u><Select an option></u>	<u></u>	<u><Select an option></u>
8.	<u><Select an option></u>	<u></u>	<u><Select an option></u>
9.	<u><Select an option></u>	<u></u>	<u><Select an option></u>
10.	<u><Select an option></u>	<u></u>	<u><Select an option></u>
11.	<u><Select an option></u>	<u></u>	<u><Select an option></u>
12.	<u><Select an option></u>	<u></u>	<u><Select an option></u>
13.	<u><Select an option></u>	<u></u>	<u><Select an option></u>
14.	<u><Select an option></u>	<u></u>	<u><Select an option></u>
15.	<u><Select an option></u>	<u></u>	<u><Select an option></u>
16.	<u><Select an option></u>	<u></u>	<u><Select an option></u>
17.	<u><Select an option></u>	<u></u>	<u><Select an option></u>
18.	<u><Select an option></u>	<u></u>	<u><Select an option></u>
19.	<u><Select an option></u>	<u></u>	<u><Select an option></u>
20.	<u><Select an option></u>	<u></u>	<u><Select an option></u>

Second Principal Disclosure Level:

Blue AT Developer, LLC

[Click here for Assistance with Completing the Entries for the Second Level Principal Disclosure for a Developer](#)

Select the corresponding First Level Principal Entity # from above for which the Second Level Principal is being identified

Second Level Entity #	Select the type of Principal being associated with the corresponding First Level Principal Entity	Enter Name of Second Level Principal	Select organizational structure of Second Level Principal identified
<u>3. (Blue Sky Communities LLC)</u>	<u>Manager</u>	<u>Wilson, Shawn</u>	<u>Natural Person</u>
<u>3. (Blue Sky Communities LLC)</u>	<u>Member</u>	<u>Wilson, Shawn</u>	<u>Natural Person</u>
<u>3. (Blue Sky Communities LLC)</u>	<u>Manager</u>	<u>Chadwick, James M.</u>	<u>Natural Person</u>
<u>3. (Blue Sky Communities LLC)</u>	<u>Member</u>	<u>Macdonald, Scott</u>	<u>Natural Person</u>
<u>3. (Blue Sky Communities LLC)</u>	<u>Member</u>	<u>Weedon Enterprises, LLC</u>	<u>Limited Liability Company</u>
<u><Select a #></u>	<u><Select an option></u>	<u></u>	<u><Select an option></u>
<u><Select a #></u>	<u><Select an option></u>	<u></u>	<u><Select an option></u>
<u><Select a #></u>	<u><Select an option></u>	<u></u>	<u><Select an option></u>
<u><Select a #></u>	<u><Select an option></u>	<u></u>	<u><Select an option></u>
<u><Select a #></u>	<u><Select an option></u>	<u></u>	<u><Select an option></u>
<u><Select a #></u>	<u><Select an option></u>	<u></u>	<u><Select an option></u>
<u><Select a #></u>	<u><Select an option></u>	<u></u>	<u><Select an option></u>
<u><Select a #></u>	<u><Select an option></u>	<u></u>	<u><Select an option></u>
<u><Select a #></u>	<u><Select an option></u>	<u></u>	<u><Select an option></u>
<u><Select a #></u>	<u><Select an option></u>	<u></u>	<u><Select an option></u>
<u><Select a #></u>	<u><Select an option></u>	<u></u>	<u><Select an option></u>
<u><Select a #></u>	<u><Select an option></u>	<u></u>	<u><Select an option></u>

Principal Disclosures for the two Developers

Select the organizational structure for the second Co-Developer entity:

The second Co-Developer is a: Limited Liability Company

Provide the name of the Developer Limited Liability Company:

CASL Developer, LLC

First Principal Disclosure Level:

CASL Developer, LLC

[Click here for Assistance with Completing the Entries for the First Level Principal Disclosure for a Developer](#)

<u>First Level Entity #</u>	<u>Select Type of Principal of Developer</u>	<u>Enter Name of First Level Principal</u>	<u>Select organizational structure of First Level Principal identified</u>
1.	<u>Manager</u>	<u>Eller, Julian S.</u>	<u>Natural Person</u>
2.	<u>Sole Member</u>	<u>Community Assisted and Supported Living, Inc.</u>	<u>Non-Profit Corporation</u>
3.	<u><Select an option></u>	<u></u>	<u><Select an option></u>
4.	<u><Select an option></u>	<u></u>	<u><Select an option></u>
5.	<u><Select an option></u>	<u></u>	<u><Select an option></u>
6.	<u><Select an option></u>	<u></u>	<u><Select an option></u>
7.	<u><Select an option></u>	<u></u>	<u><Select an option></u>
8.	<u><Select an option></u>	<u></u>	<u><Select an option></u>
9.	<u><Select an option></u>	<u></u>	<u><Select an option></u>
10.	<u><Select an option></u>	<u></u>	<u><Select an option></u>
11.	<u><Select an option></u>	<u></u>	<u><Select an option></u>
12.	<u><Select an option></u>	<u></u>	<u><Select an option></u>
13.	<u><Select an option></u>	<u></u>	<u><Select an option></u>
14.	<u><Select an option></u>	<u></u>	<u><Select an option></u>
15.	<u><Select an option></u>	<u></u>	<u><Select an option></u>
16.	<u><Select an option></u>	<u></u>	<u><Select an option></u>
17.	<u><Select an option></u>	<u></u>	<u><Select an option></u>
18.	<u><Select an option></u>	<u></u>	<u><Select an option></u>
19.	<u><Select an option></u>	<u></u>	<u><Select an option></u>
20.	<u><Select an option></u>	<u></u>	<u><Select an option></u>

Second Principal Disclosure Level:

CASL Developer, LLC

[Click here for Assistance with Completing the Entries for the Second Level Principal Disclosure for a Developer](#)

<u>Select the corresponding First Level Principal Entity # from above for which the Second Level Principal is being</u>	<u>Second Level Entity #</u>	<u>Select the type of Principal being associated with the corresponding First Level Principal Entity</u>	<u>Enter Name of Second Level Principal</u>	<u>Select organizational structure of Second Level Principal identified</u>
<u>2. (Community Assisted and Suppo</u>	<u>2.A.</u>	<u>Executive Director</u>	<u>Eller, Julian S.</u>	<u>Natural Person</u>
<u>2. (Community Assisted and Suppo</u>	<u>2.B.</u>	<u>Officer/Director</u>	<u>Armstrong, Steve</u>	<u>Natural Person</u>
<u>2. (Community Assisted and Suppo</u>	<u>2.C.</u>	<u>Officer/Director</u>	<u>Kreisman, Diane</u>	<u>Natural Person</u>
<u>2. (Community Assisted and Suppo</u>	<u>2.D.</u>	<u>Officer/Director</u>	<u>Stoner, Rebecca U.</u>	<u>Natural Person</u>
<u>2. (Community Assisted and Suppo</u>	<u>2.E.</u>	<u>Officer/Director</u>	<u>Ulrich, Richard A.</u>	<u>Natural Person</u>
<u>2. (Community Assisted and Suppo</u>	<u>2.F.</u>	<u>Officer/Director</u>	<u>Hedley, Harold</u>	<u>Natural Person</u>
<u>2. (Community Assisted and Suppo</u>	<u>2.G.</u>	<u>Officer/Director</u>	<u>Bilyeu, Danny</u>	<u>Natural Person</u>
<u>2. (Community Assisted and Suppo</u>	<u>2.H.</u>	<u>Officer/Director</u>	<u>O'Dell, Daleen</u>	<u>Natural Person</u>
<u><Select a #></u>	<u></u>	<u><Select an option></u>	<u></u>	<u><Select an option></u>
<u><Select a #></u>	<u></u>	<u><Select an option></u>	<u></u>	<u><Select an option></u>
<u><Select a #></u>	<u></u>	<u><Select an option></u>	<u></u>	<u><Select an option></u>
<u><Select a #></u>	<u></u>	<u><Select an option></u>	<u></u>	<u><Select an option></u>
<u><Select a #></u>	<u></u>	<u><Select an option></u>	<u></u>	<u><Select an option></u>
<u><Select a #></u>	<u></u>	<u><Select an option></u>	<u></u>	<u><Select an option></u>
<u><Select a #></u>	<u></u>	<u><Select an option></u>	<u></u>	<u><Select an option></u>
<u><Select a #></u>	<u></u>	<u><Select an option></u>	<u></u>	<u><Select an option></u>
<u><Select a #></u>	<u></u>	<u><Select an option></u>	<u></u>	<u><Select an option></u>
<u><Select a #></u>	<u></u>	<u><Select an option></u>	<u></u>	<u><Select an option></u>
<u><Select a #></u>	<u></u>	<u><Select an option></u>	<u></u>	<u><Select an option></u>