



Abundant Life Ministries-Hope House, Inc.
P.O. Box 354925
Palm Coast, FL 32135
Office: 386-597-2861* www.almhhi.org* administrator@almhhi.org

November 1, 2022

Jean Salmonsens
Florida Housing Finance Corporation
227 N Bronough St # 5000
Tallahassee, FL 32301

RE: Phoenix Crossings Development Project

Dear Ms. Salmonsens:

Abundant Life Ministries-Hope House, Inc., will be applying for RFA 2023-102 in the next SAIL funding cycle to develop Phoenix Crossings PSH to be located in Flagler County, a medium sized county. Upon review of the draft RFA and the youth aging out of foster goal, it is my recommendation to modify the "Demographic Populations to be served" to reconsider the "The County's number of exits..." to "The Circuit's number of exits....".

If the demographic population to be served is limited to the County it will not accurately reflect the data for youth who are "out of area placements". When youth are placed in a group home setting it is possible that the Child Placing Agency may be located in another county, circuit and/or region. There are 20 circuits divided amongst 67 counties and 18 Community Based Care Lead Agencies; in order to present the most reliable data it can only be captured by Circuit.

Thank you for considering our recommendation to reconsider quantifying the data at the County level to the Circuit level. Please don't hesitate to contact me if you would like to further discuss the RFA and the unique needs of youth aging out of foster care.

Sincerely,

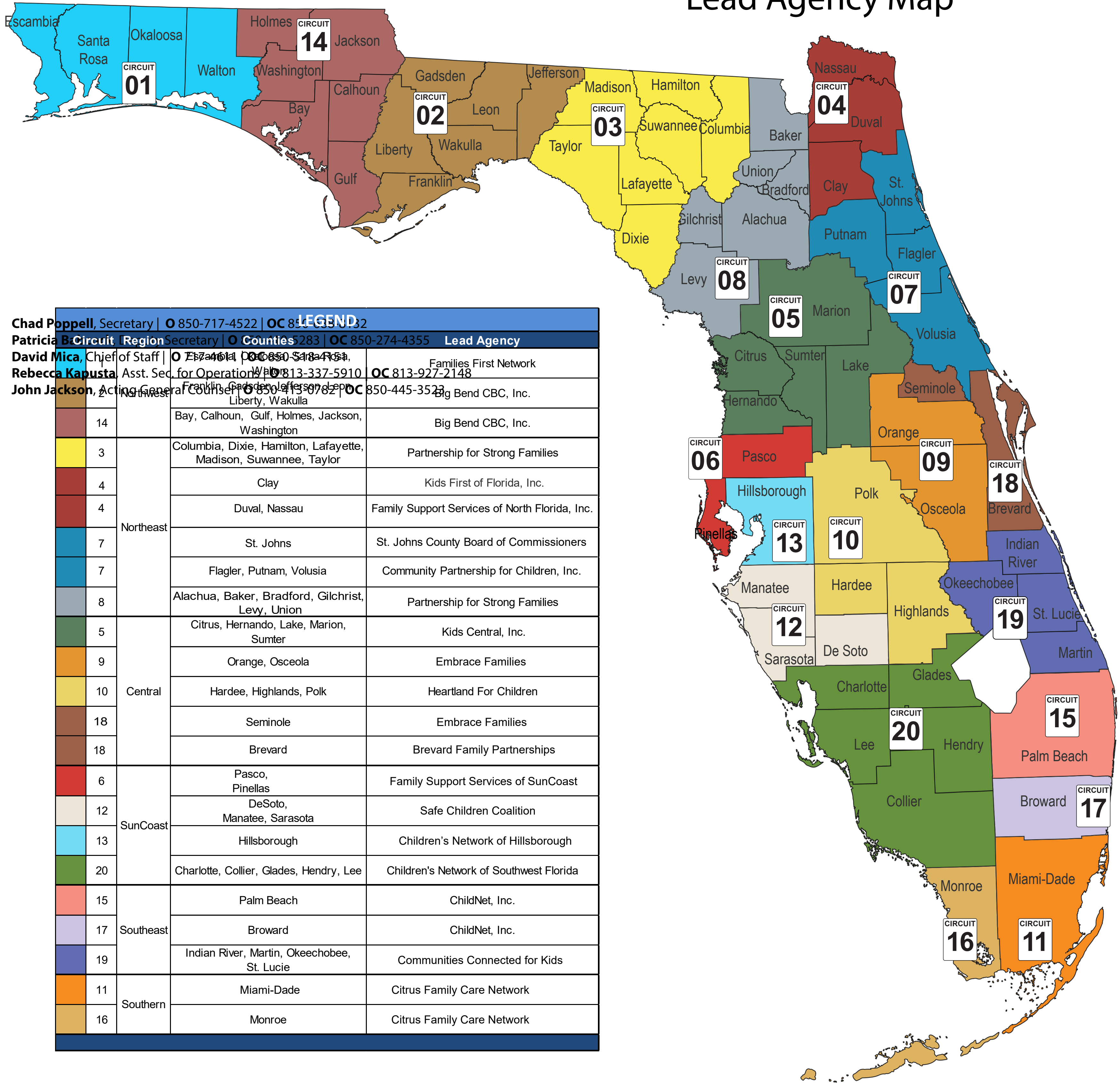
Sandra Shank

Sandra Shank
CEO/Founder



Community-Based Care

Lead Agency Map



LEGEND			
Circuit	Region	Counties	Lead Agency
01	Northwest	Escambia, Santa Rosa, Okaloosa, Walton	Families First Network
02	Northwest	Washington, Bay, Calhoun, Liberty, Wakulla, Franklin, Gulf	Big Bend CBC, Inc.
03	Northwest	Gadsden, Leon, Taylor, Madison, Hamilton, Suwannee, Columbia	Partnership for Strong Families
04	Northeast	Nassau, Duval, Clay	Kids First of Florida, Inc.
05	Northeast	Marion, Citrus, Sumter, Lake, Hernando	Kids Central, Inc.
06	Northeast	Pasco, Pinellas	Family Support Services of North Florida, Inc.
07	Northeast	St. Johns, Flagler, Putnam, Volusia	St. Johns County Board of Commissioners
08	Northeast	Alachua, Baker, Bradford, Gilchrist, Levy, Union	Community Partnership for Children, Inc.
09	Central	Orange, Osceola	Partnership for Strong Families
10	Central	Hardee, Highlands, Polk	Embrace Families
11	Central	Seminole, Brevard	Heartland For Children
12	SunCoast	Manatee, De Soto, Sarasota	Embrace Families
13	SunCoast	Hillsborough	Brevard Family Partnerships
14	Northwest	Bay, Calhoun, Gulf, Holmes, Jackson, Washington	Family Support Services of SunCoast
15	Southeast	Palm Beach	Safe Children Coalition
16	Southern	Monroe	Children's Network of Hillsborough
17	Southeast	Broward	Children's Network of Southwest Florida
18	Northeast	Duval, Nassau	ChildNet, Inc.
19	Southeast	Indian River, Martin, Okeechobee, St. Lucie	ChildNet, Inc.
20	Southern	Charlotte, Collier, Glades, Hendry, Lee	Communities Connected for Kids
11	Southern	Miami-Dade	Citrus Family Care Network
16	Southern	Monroe	Citrus Family Care Network

Chad Poppell, Secretary | O 850-717-4522 | OC 850-445-3523

Patricia B. Circuit, Secretary | O 850-528-5283 | OC 850-274-4355 | Lead Agency

David Mica, Chief of Staff | O 850-413-0782 | OC 850-518-4151

Rebecca Kapusta, Asst. Sec. for Operations | O 813-337-5910 | OC 813-927-2148

John Jackson, Acting General Counsel | O 850-413-0782 | OC 850-445-3523